

陶朱隱園住宅大樓 結構工程設計

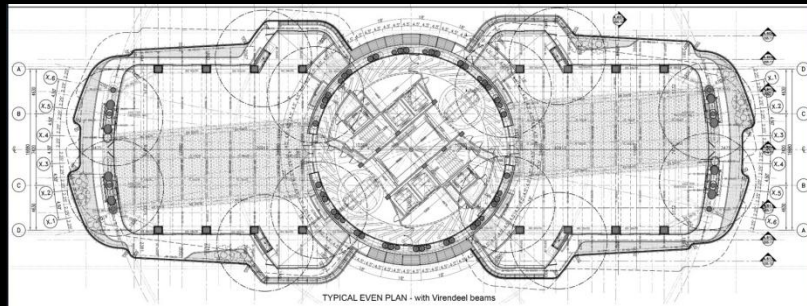
張敬禮 King-Le Chang

傑聯國際工程顧問
KING-LE CHANG & ASSOCIATES

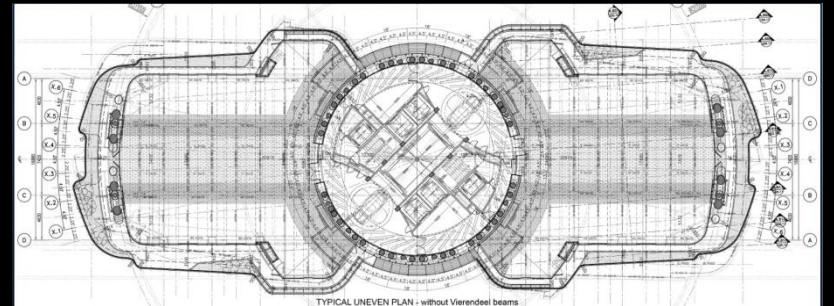
KINC

TES

建築設計



雙數樓層 (有邊柱)

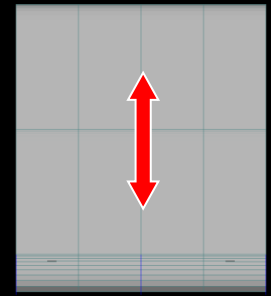
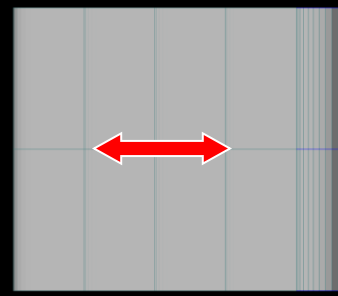
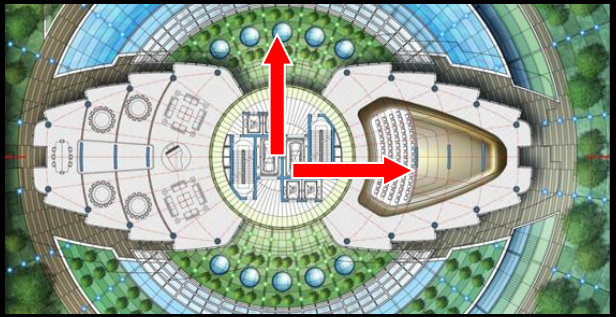


單數樓層 (無邊柱)

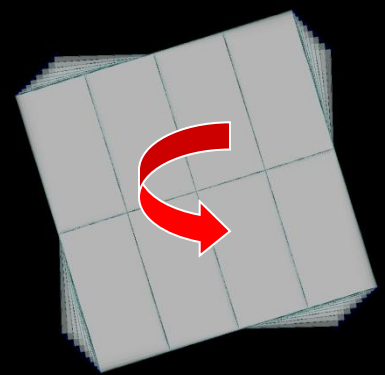
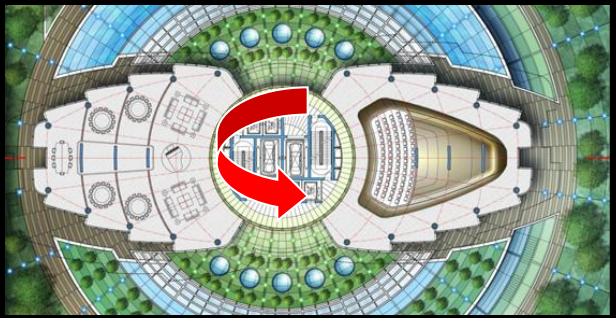
結構設計目標

- 結構基本振態：先平移 (Translation)
再扭轉 (Rotation)

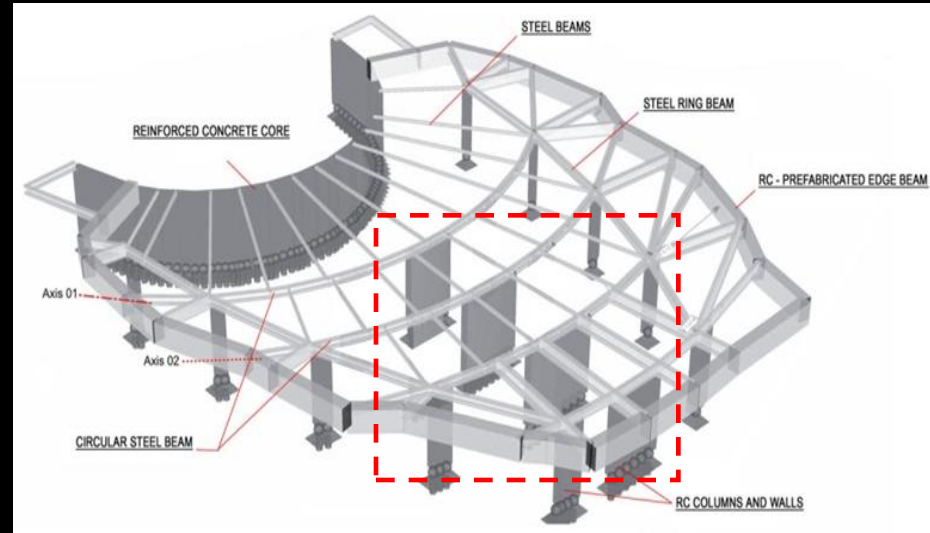
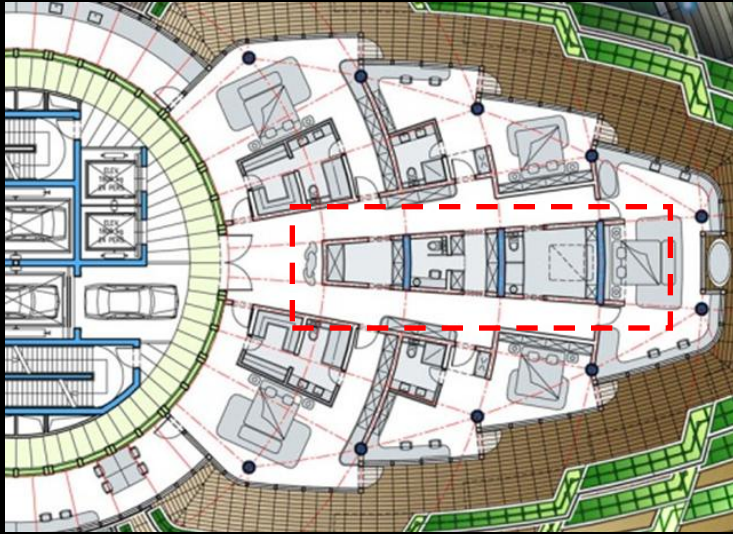
Translation



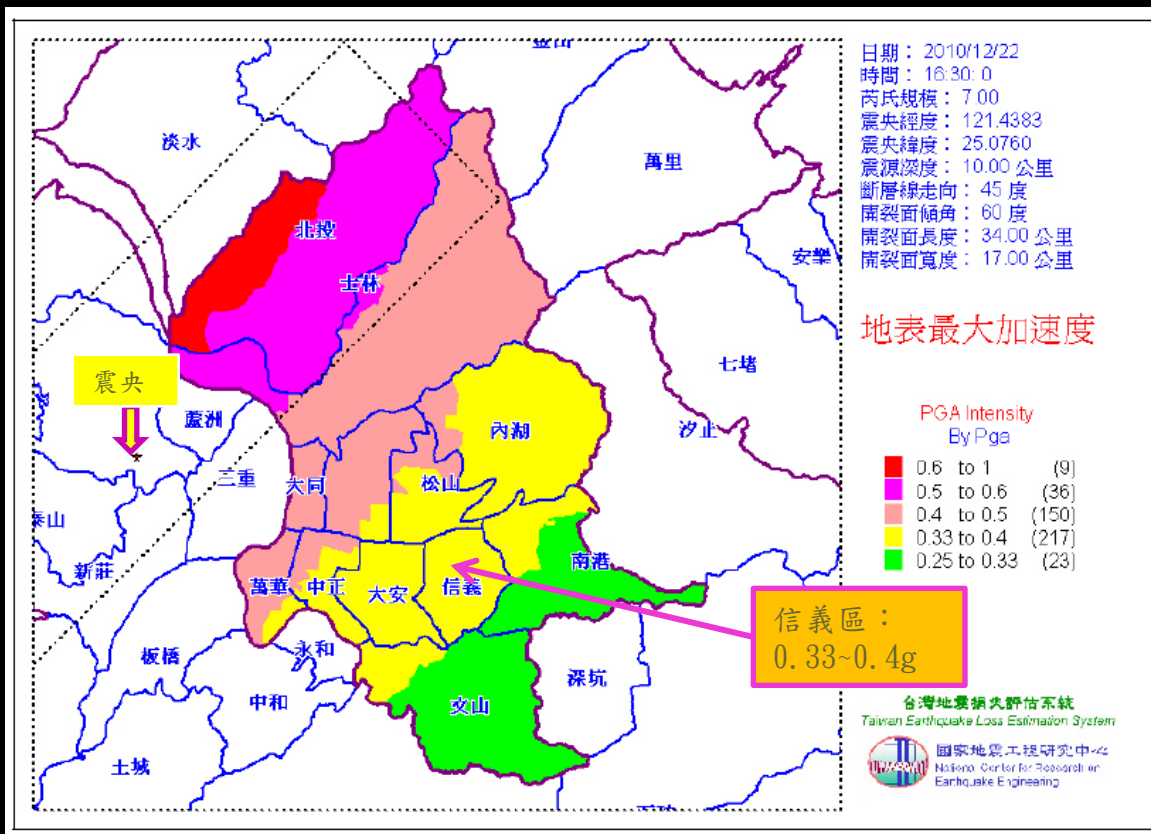
Rotation



- 室內無柱之使用空間，且淨高至少3公尺。



■ 七級地震 (PGA=0.40g) 結構保持彈性

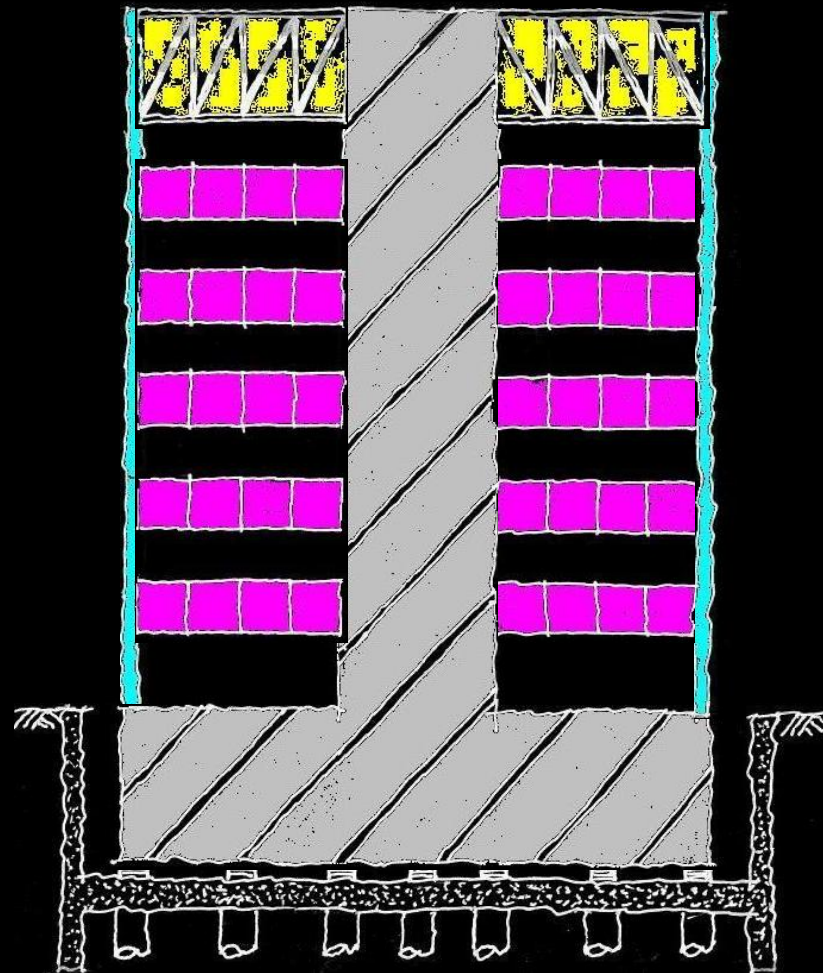


學術論文：

山腳斷層發生芮氏規模7.0之最大地表加速度模擬分析結果

結構系統

■ 上部結構系統



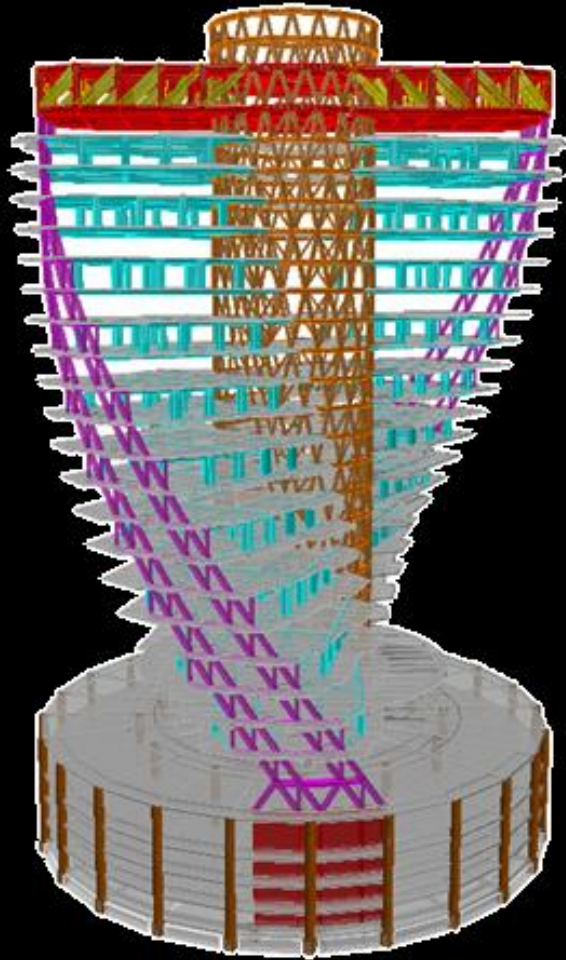
STEEL CORE

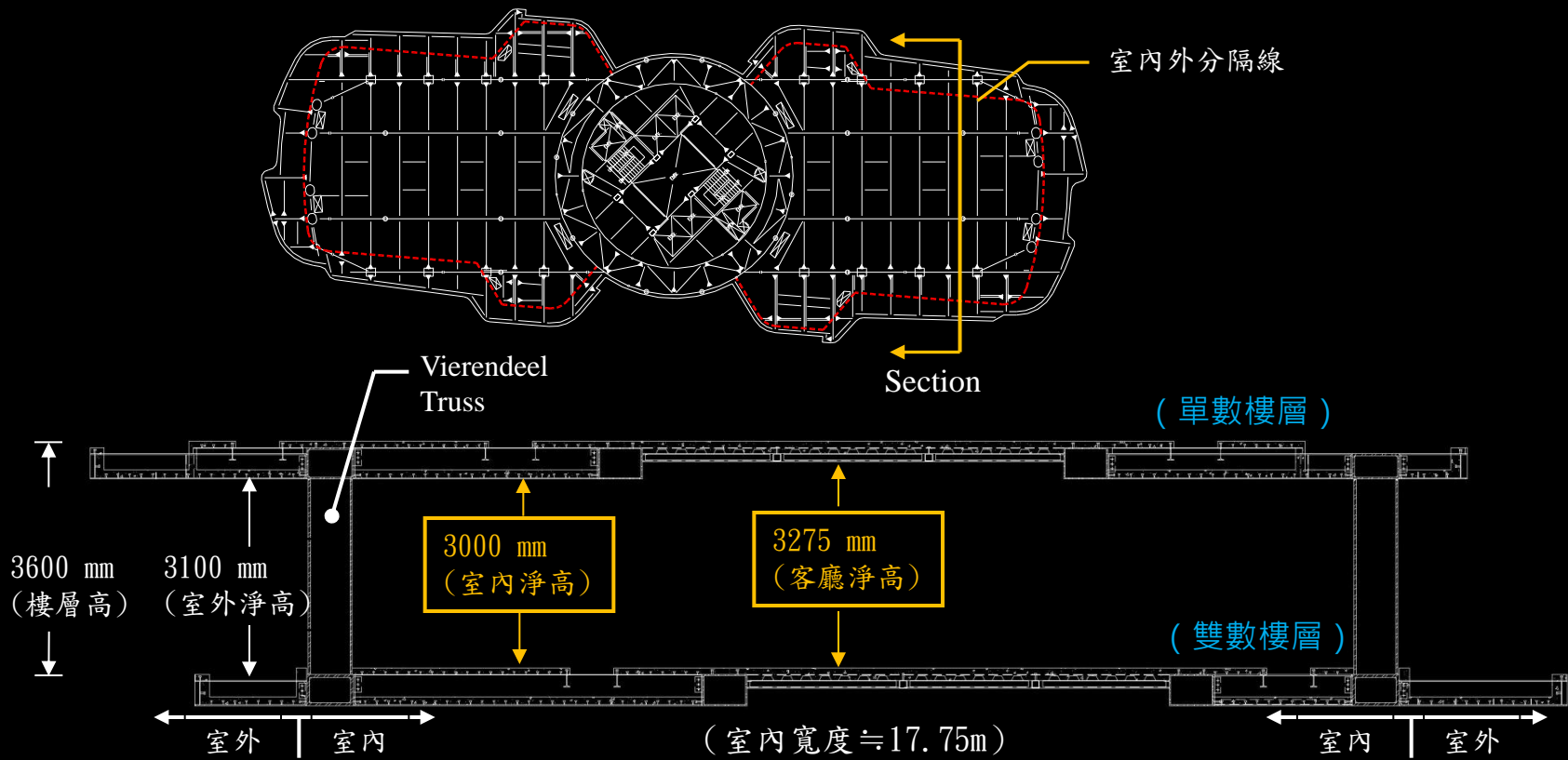
MEGA COLUMN

VIERENDEEL TRUSS

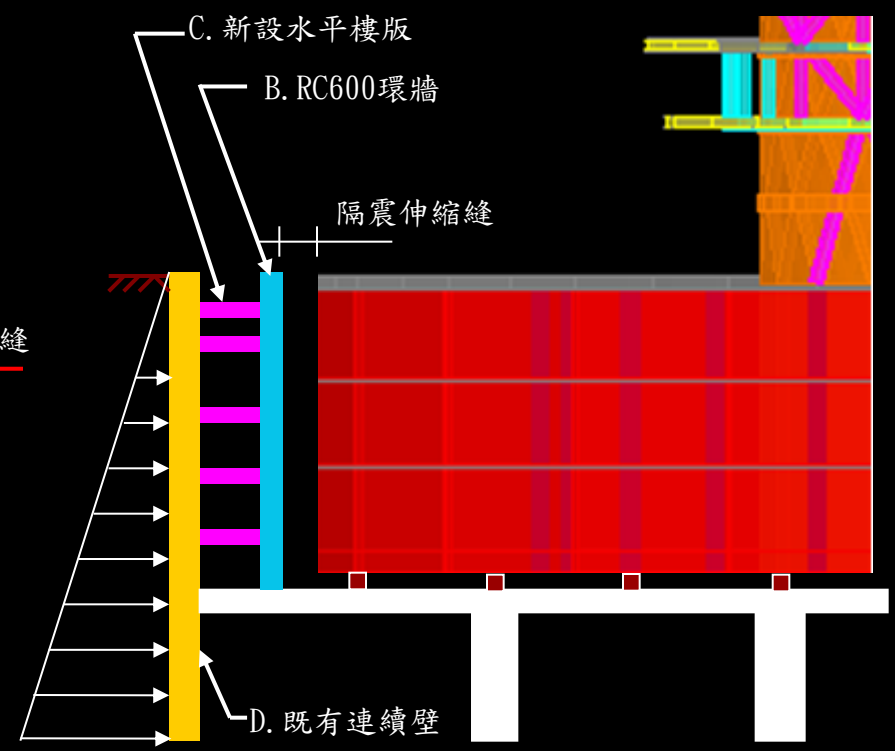
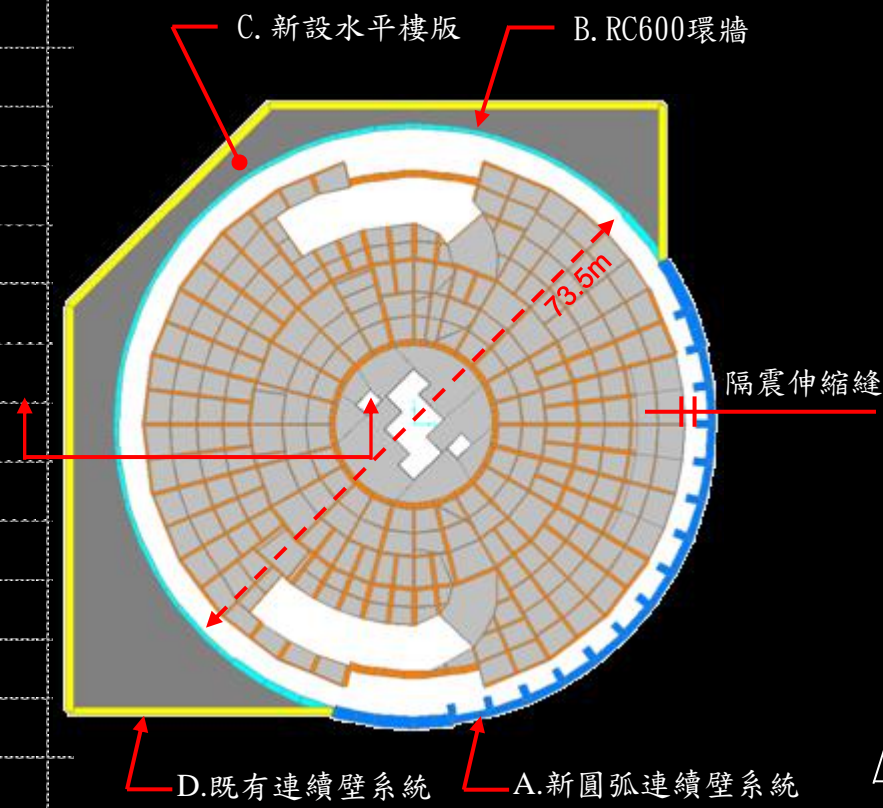
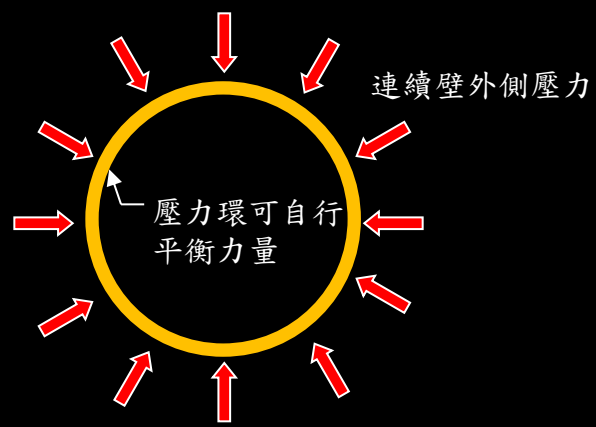
OUTRIGGER TRUSS

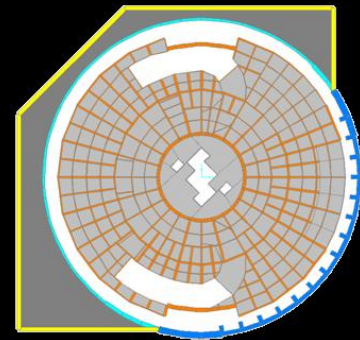
ISOLATOR、
SLURRY WALL &
FOUNDATION





■ 地下層擋土結構系統





工地施工照片



Tao Chu Yin Yuan

Best Tall Building Award Finalist

Innovation Award 2015



The End.
